

MATTISON[®]

CONTRACT BEDS

FABRIC OPTIONS

AGUA NOVA

MATTRESSES | DIVANS | HEADBOARDS | SOFA BEDS



BEDS FOR BUSINESS • DESIGNED FOR DEMAND

MATTISON®

CONTRACT BEDS

MATTRESSES | DIVANS | HEADBOARDS | SOFA BEDS



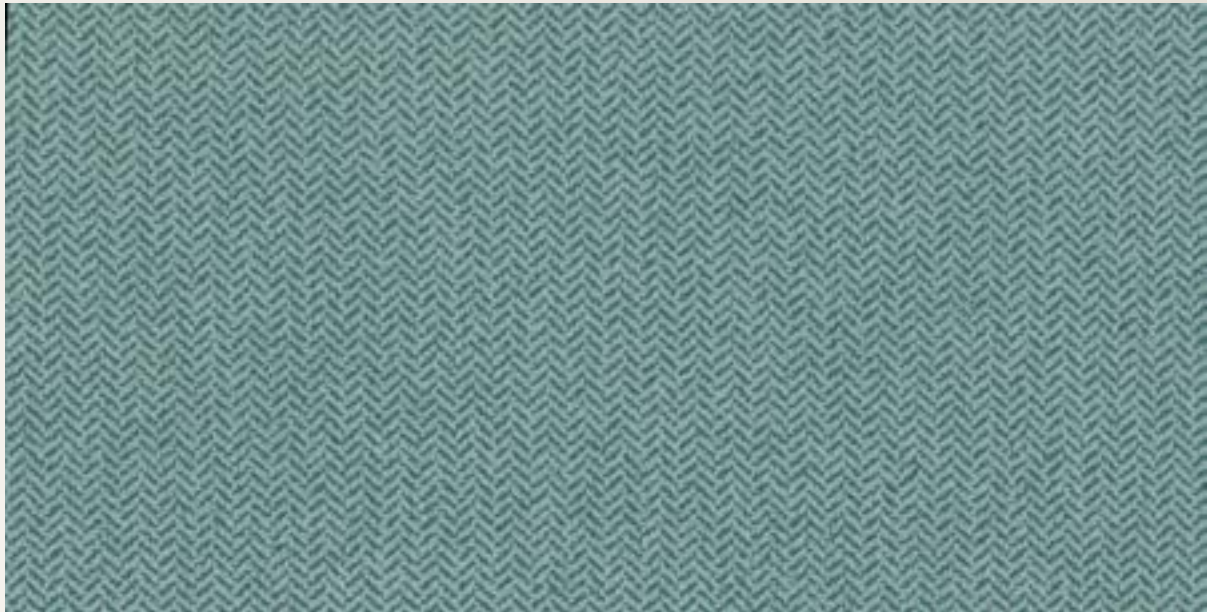
MATTISON®

CONTRACT BEDS

MATTRESSES | DIVANS | HEADBOARDS | SOFA BEDS

AGUA NOVA - SEA GRASS

T1347



Composition	100% treated Polyester
Width	145cms (57") approx
Usage	Severe Contract Use
Flame Retardant	This fabric conforms to BS 5852 CRIB Ignition Source 5



AGUA NOVA has been designed for use in demanding environments; the Nova collection is a high performance fabric that provides comfort and luxury.

For headboard pricing in AGUA NOVA, please refer to Band C.

COLOUR MATCHING

Every effort is made to ensure the closest possible colour match to our pattern books, but we are unable to guarantee an exact match. If you require to match to fabric, please send us a sample or request a stock cutting of the shade.

The images shown in this document are close representations of fabric colours/weave. We do recommend you request samples to be provided to you prior to ordering. To request samples please contact us via 01473 255 888 or email our sales team on info@mattisoncontractbeds.co.uk



INDUSTRY
PARTNER



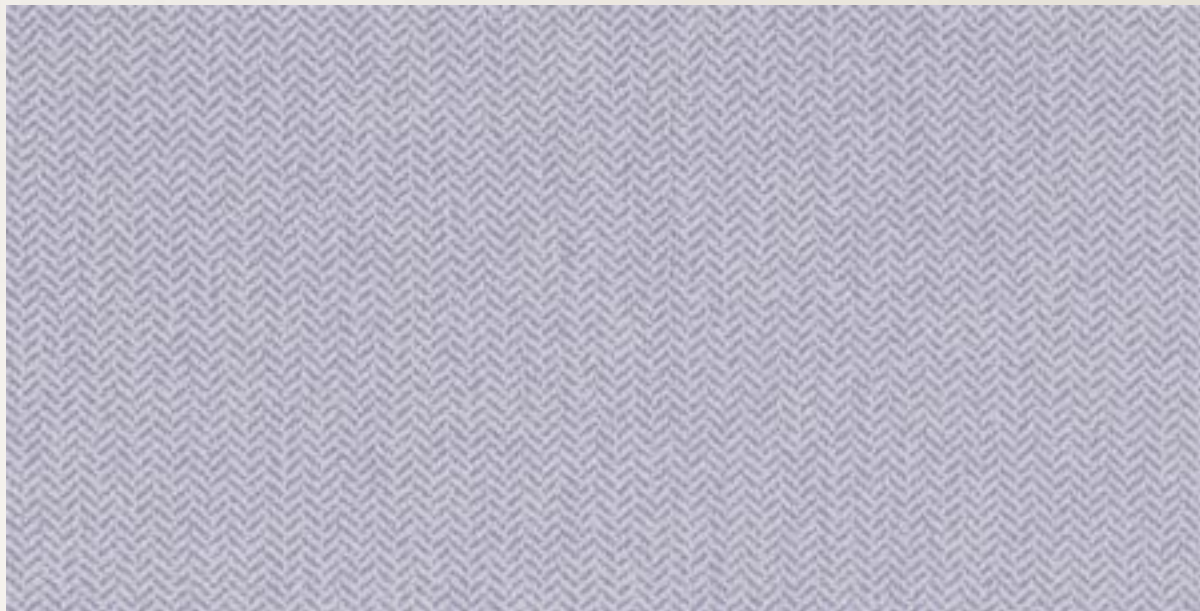
MATTISON®

CONTRACT BEDS

MATTRESSES | DIVANS | HEADBOARDS | SOFA BEDS

AGUA NOVA - LAVENDER

T1379



Composition	100% treated Polyester
Width	145cms (57") approx
Usage	Severe Contract Use
Flame Retardant	This fabric conforms to BS 5852 CRIB Ignition Source 5



AGUA NOVA has been designed for use in demanding environments; the Nova collection is a high performance fabric that provides comfort and luxury.

For headboard pricing in AGUA NOVA, please refer to Band C.

COLOUR MATCHING

Every effort is made to ensure the closest possible colour match to our pattern books, but we are unable to guarantee an exact match. If you require to match to fabric, please send us a sample or request a stock cutting of the shade.

The images shown in this document are close representations of fabric colours/weave. We do recommend you request samples to be provided to you prior to ordering. To request samples please contact us via 01473 255 888 or email our sales team on info@mattisoncontractbeds.co.uk



INDUSTRY
PARTNER



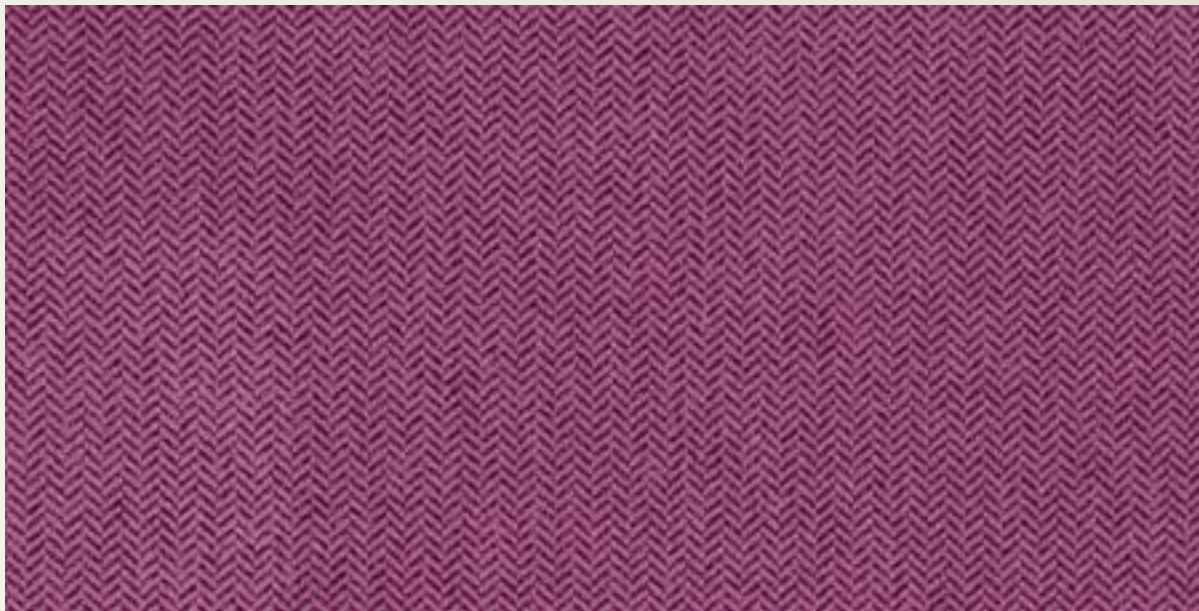
MATTISON®

CONTRACT BEDS

MATTRESSES | DIVANS | HEADBOARDS | SOFA BEDS

AGUA NOVA - CLARET

T1473



Composition	100% treated Polyester
Width	145cms (57") approx
Usage	Severe Contract Use
Flame Retardant	This fabric conforms to BS 5852 CRIB Ignition Source 5



AGUA NOVA has been designed for use in demanding environments; the Nova collection is a high performance fabric that provides comfort and luxury.

For headboard pricing in AGUA NOVA, please refer to Band C.

COLOUR MATCHING

Every effort is made to ensure the closest possible colour match to our pattern books, but we are unable to guarantee an exact match. If you require to match to fabric, please send us a sample or request a stock cutting of the shade.

The images shown in this document are close representations of fabric colours/weave. We do recommend you request samples to be provided to you prior to ordering. To request samples please contact us via 01473 255 888 or email our sales team on info@mattisoncontractbeds.co.uk



INDUSTRY
PARTNER



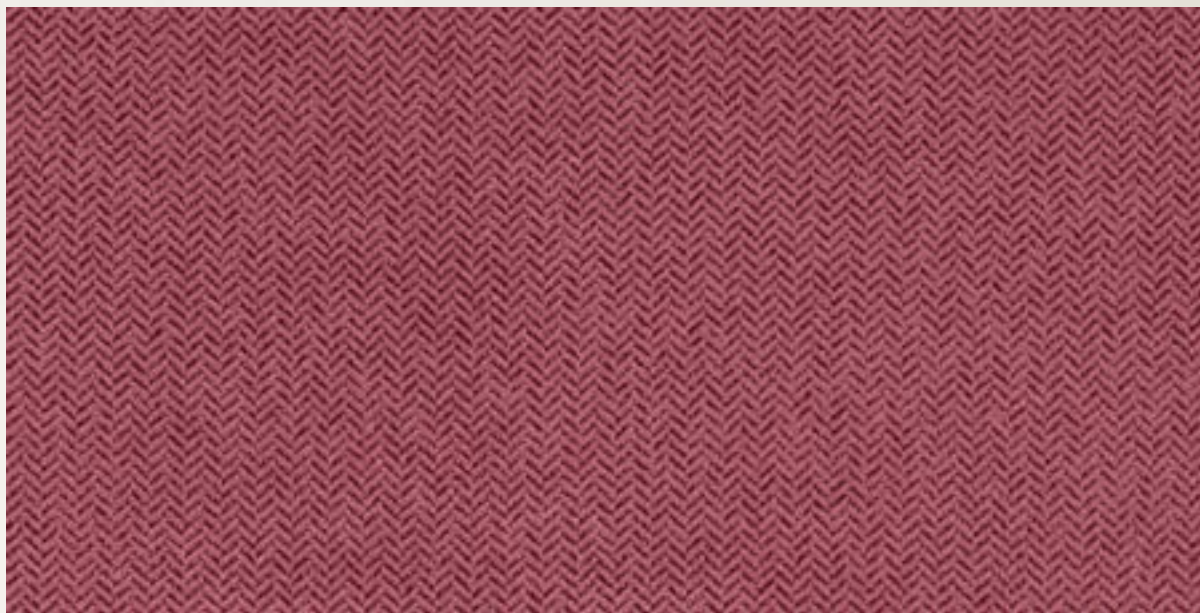
MATTISON®

CONTRACT BEDS

MATTRESSES | DIVANS | HEADBOARDS | SOFA BEDS

AGUA NOVA - BURGUNDY

T1382



Composition	100% treated Polyester
Width	145cms (57") approx
Usage	Severe Contract Use
Flame Retardant	This fabric conforms to BS 5852 CRIB Ignition Source 5



AGUA NOVA has been designed for use in demanding environments; the Nova collection is a high performance fabric that provides comfort and luxury.

For headboard pricing in AGUA NOVA, please refer to Band C.

COLOUR MATCHING

Every effort is made to ensure the closest possible colour match to our pattern books, but we are unable to guarantee an exact match. If you require to match to fabric, please send us a sample or request a stock cutting of the shade.

The images shown in this document are close representations of fabric colours/weave. We do recommend you request samples to be provided to you prior to ordering. To request samples please contact us via 01473 255 888 or email our sales team on info@mattisoncontractbeds.co.uk



INDUSTRY
PARTNER



MATTISON®

CONTRACT BEDS

MATTRESSES | DIVANS | HEADBOARDS | SOFA BEDS

AGUA NOVA - DAMSON

T1350



Composition	100% treated Polyester
Width	145cms (57") approx
Usage	Severe Contract Use
Flame Retardant	This fabric conforms to BS 5852 CRIB Ignition Source 5



AGUA NOVA has been designed for use in demanding environments; the Nova collection is a high performance fabric that provides comfort and luxury.

For headboard pricing in AGUA NOVA, please refer to Band C.

COLOUR MATCHING

Every effort is made to ensure the closest possible colour match to our pattern books, but we are unable to guarantee an exact match. If you require to match to fabric, please send us a sample or request a stock cutting of the shade.

The images shown in this document are close representations of fabric colours/weave. We do recommend you request samples to be provided to you prior to ordering. To request samples please contact us via 01473 255 888 or email our sales team on info@mattisoncontractbeds.co.uk



INDUSTRY
PARTNER



MATTISON®

CONTRACT BEDS

MATTRESSES | DIVANS | HEADBOARDS | SOFA BEDS

AGUA NOVA - GRAPE

T1380



Composition	100% treated Polyester
Width	145cms (57") approx
Usage	Severe Contract Use
Flame Retardant	This fabric conforms to BS 5852 CRIB Ignition Source 5



AGUA NOVA has been designed for use in demanding environments; the Nova collection is a high performance fabric that provides comfort and luxury.

For headboard pricing in AGUA NOVA, please refer to Band C.

COLOUR MATCHING

Every effort is made to ensure the closest possible colour match to our pattern books, but we are unable to guarantee an exact match. If you require to match to fabric, please send us a sample or request a stock cutting of the shade.

The images shown in this document are close representations of fabric colours/weave. We do recommend you request samples to be provided to you prior to ordering. To request samples please contact us via 01473 255 888 or email our sales team on info@mattisoncontractbeds.co.uk



INDUSTRY
PARTNER



MATTISON®

CONTRACT BEDS

MATTRESSES | DIVANS | HEADBOARDS | SOFA BEDS

AGUA NOVA - DILL

T1503



Composition	100% treated Polyester
Width	145cms (57") approx
Usage	Severe Contract Use
Flame Retardant	This fabric conforms to BS 5852 CRIB Ignition Source 5



AGUA NOVA has been designed for use in demanding environments; the Nova collection is a high performance fabric that provides comfort and luxury.

For headboard pricing in AGUA NOVA, please refer to Band C.

COLOUR MATCHING

Every effort is made to ensure the closest possible colour match to our pattern books, but we are unable to guarantee an exact match. If you require to match to fabric, please send us a sample or request a stock cutting of the shade.

The images shown in this document are close representations of fabric colours/weave. We do recommend you request samples to be provided to you prior to ordering. To request samples please contact us via 01473 255 888 or email our sales team on info@mattisoncontractbeds.co.uk



INDUSTRY
PARTNER



MATTISON®

CONTRACT BEDS

MATTRESSES | DIVANS | HEADBOARDS | SOFA BEDS

AGUA NOVA - FENNEL

T1355



Composition	100% treated Polyester
Width	145cms (57") approx
Usage	Severe Contract Use
Flame Retardant	This fabric conforms to BS 5852 CRIB Ignition Source 5



AGUA NOVA has been designed for use in demanding environments; the Nova collection is a high performance fabric that provides comfort and luxury.

For headboard pricing in AGUA NOVA, please refer to Band C.

COLOUR MATCHING

Every effort is made to ensure the closest possible colour match to our pattern books, but we are unable to guarantee an exact match. If you require to match to fabric, please send us a sample or request a stock cutting of the shade.

The images shown in this document are close representations of fabric colours/weave. We do recommend you request samples to be provided to you prior to ordering. To request samples please contact us via 01473 255 888 or email our sales team on info@mattisoncontractbeds.co.uk



INDUSTRY
PARTNER



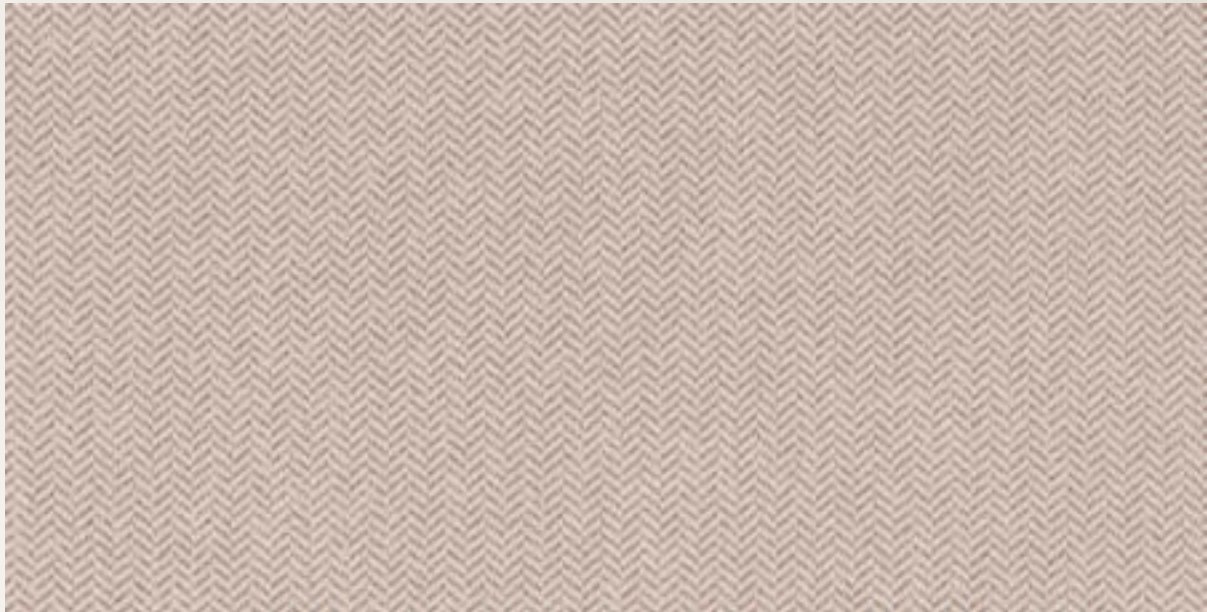
MATTISON®

CONTRACT BEDS

MATTRESSES | DIVANS | HEADBOARDS | SOFA BEDS

AGUA NOVA - OATMEAL

T1339



Composition	100% treated Polyester
Width	145cms (57") approx
Usage	Severe Contract Use
Flame Retardant	This fabric conforms to BS 5852 CRIB Ignition Source 5



AGUA NOVA has been designed for use in demanding environments; the Nova collection is a high performance fabric that provides comfort and luxury.

For headboard pricing in AGUA NOVA, please refer to Band C.

COLOUR MATCHING

Every effort is made to ensure the closest possible colour match to our pattern books, but we are unable to guarantee an exact match. If you require to match to fabric, please send us a sample or request a stock cutting of the shade.

The images shown in this document are close representations of fabric colours/weave. We do recommend you request samples to be provided to you prior to ordering. To request samples please contact us via 01473 255 888 or email our sales team on info@mattisoncontractbeds.co.uk



INDUSTRY
PARTNER



MATTISON®

CONTRACT BEDS

MATTRESSES | DIVANS | HEADBOARDS | SOFA BEDS

AGUA NOVA - LATTE

T1349



Composition	100% treated Polyester
Width	145cms (57") approx
Usage	Severe Contract Use
Flame Retardant	This fabric conforms to BS 5852 CRIB Ignition Source 5



AGUA NOVA has been designed for use in demanding environments; the Nova collection is a high performance fabric that provides comfort and luxury.

For headboard pricing in AGUA NOVA, please refer to Band C.

COLOUR MATCHING

Every effort is made to ensure the closest possible colour match to our pattern books, but we are unable to guarantee an exact match. If you require to match to fabric, please send us a sample or request a stock cutting of the shade.

The images shown in this document are close representations of fabric colours/weave. We do recommend you request samples to be provided to you prior to ordering. To request samples please contact us via 01473 255 888 or email our sales team on info@mattisoncontractbeds.co.uk



INDUSTRY
PARTNER



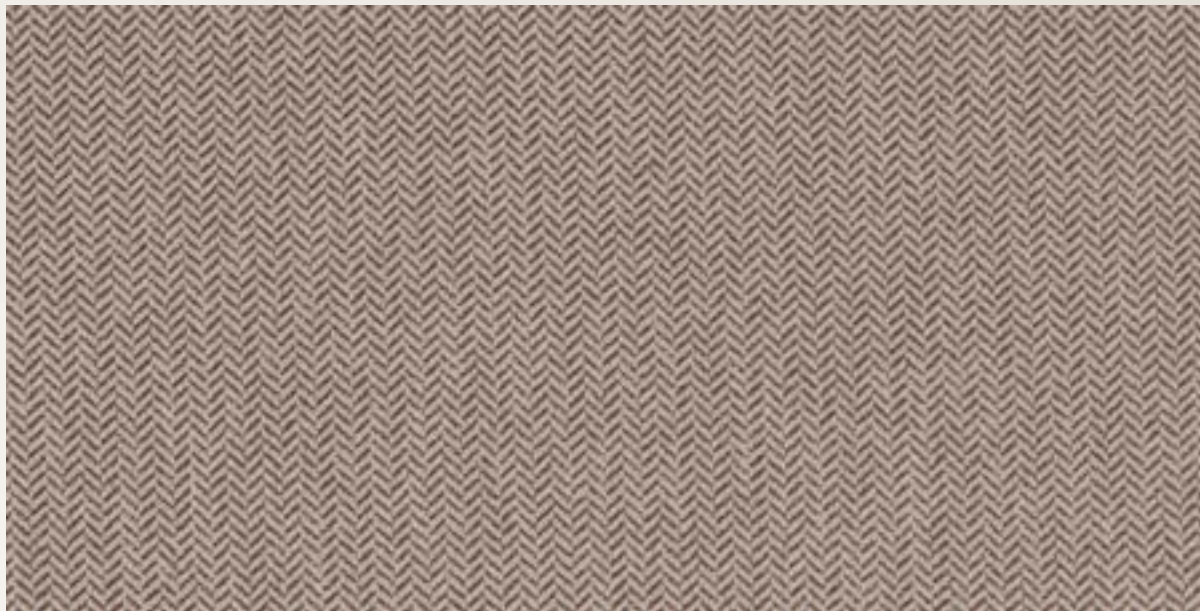
MATTISON®

CONTRACT BEDS

MATTRESSES | DIVANS | HEADBOARDS | SOFA BEDS

AGUA NOVA - TAUPE

T1501



Composition	100% treated Polyester
Width	145cms (57") approx
Usage	Severe Contract Use
Flame Retardant	This fabric conforms to BS 5852 CRIB Ignition Source 5



AGUA NOVA has been designed for use in demanding environments; the Nova collection is a high performance fabric that provides comfort and luxury.

For headboard pricing in AGUA NOVA, please refer to Band C.

COLOUR MATCHING

Every effort is made to ensure the closest possible colour match to our pattern books, but we are unable to guarantee an exact match. If you require to match to fabric, please send us a sample or request a stock cutting of the shade.

The images shown in this document are close representations of fabric colours/weave. We do recommend you request samples to be provided to you prior to ordering. To request samples please contact us via 01473 255 888 or email our sales team on info@mattisoncontractbeds.co.uk



INDUSTRY
PARTNER



MATTISON®

CONTRACT BEDS

MATTRESSES | DIVANS | HEADBOARDS | SOFA BEDS

AGUA NOVA - SAGE

T1369



Composition	100% treated Polyester
Width	145cms (57") approx
Usage	Severe Contract Use
Flame Retardant	This fabric conforms to BS 5852 CRIB Ignition Source 5



AGUA NOVA has been designed for use in demanding environments; the Nova collection is a high performance fabric that provides comfort and luxury.

For headboard pricing in AGUA NOVA, please refer to Band C.

COLOUR MATCHING

Every effort is made to ensure the closest possible colour match to our pattern books, but we are unable to guarantee an exact match. If you require to match to fabric, please send us a sample or request a stock cutting of the shade.

The images shown in this document are close representations of fabric colours/weave. We do recommend you request samples to be provided to you prior to ordering. To request samples please contact us via 01473 255 888 or email our sales team on info@mattisoncontractbeds.co.uk



INDUSTRY
PARTNER



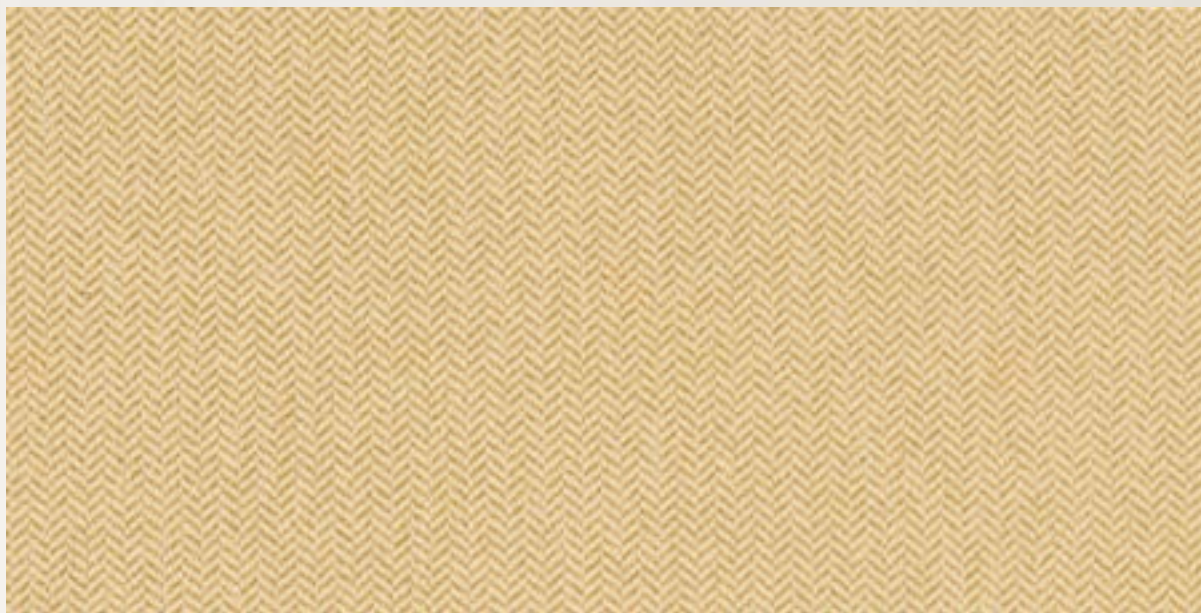
MATTISON®

CONTRACT BEDS

MATTRESSES | DIVANS | HEADBOARDS | SOFA BEDS

AGUA NOVA - LEMON

T1504



Composition	100% treated Polyester
Width	145cms (57") approx
Usage	Severe Contract Use
Flame Retardant	This fabric conforms to BS 5852 CRIB Ignition Source 5



AGUA NOVA has been designed for use in demanding environments; the Nova collection is a high performance fabric that provides comfort and luxury.

For headboard pricing in AGUA NOVA, please refer to Band C.

COLOUR MATCHING

Every effort is made to ensure the closest possible colour match to our pattern books, but we are unable to guarantee an exact match. If you require to match to fabric, please send us a sample or request a stock cutting of the shade.

The images shown in this document are close representations of fabric colours/weave. We do recommend you request samples to be provided to you prior to ordering. To request samples please contact us via 01473 255 888 or email our sales team on info@mattisoncontractbeds.co.uk



INDUSTRY
PARTNER



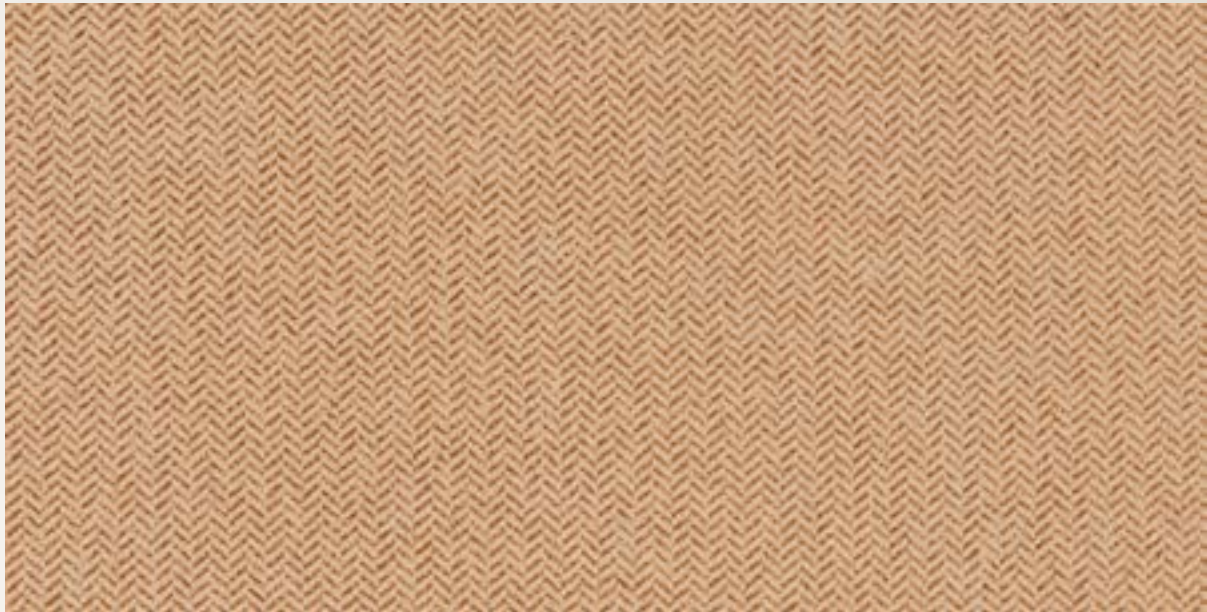
MATTISON®

CONTRACT BEDS

MATTRESSES | DIVANS | HEADBOARDS | SOFA BEDS

AGUA NOVA - SAFFRON

T1354



Composition	100% treated Polyester
Width	145cms (57") approx
Usage	Severe Contract Use
Flame Retardant	This fabric conforms to BS 5852 CRIB Ignition Source 5



AGUA NOVA has been designed for use in demanding environments; the Nova collection is a high performance fabric that provides comfort and luxury.

For headboard pricing in AGUA NOVA, please refer to Band C.

COLOUR MATCHING

Every effort is made to ensure the closest possible colour match to our pattern books, but we are unable to guarantee an exact match. If you require to match to fabric, please send us a sample or request a stock cutting of the shade.

The images shown in this document are close representations of fabric colours/weave. We do recommend you request samples to be provided to you prior to ordering. To request samples please contact us via 01473 255 888 or email our sales team on info@mattisoncontractbeds.co.uk



INDUSTRY
PARTNER



MATTISON®

CONTRACT BEDS

MATTRESSES | DIVANS | HEADBOARDS | SOFA BEDS

AGUA NOVA - LIME

T1371



Composition	100% treated Polyester
Width	145cms (57") approx
Usage	Severe Contract Use
Flame Retardant	This fabric conforms to BS 5852 CRIB Ignition Source 5



AGUA NOVA has been designed for use in demanding environments; the Nova collection is a high performance fabric that provides comfort and luxury.

For headboard pricing in AGUA NOVA, please refer to Band C.

COLOUR MATCHING

Every effort is made to ensure the closest possible colour match to our pattern books, but we are unable to guarantee an exact match. If you require to match to fabric, please send us a sample or request a stock cutting of the shade.

The images shown in this document are close representations of fabric colours/weave. We do recommend you request samples to be provided to you prior to ordering. To request samples please contact us via 01473 255 888 or email our sales team on info@mattisoncontractbeds.co.uk



INDUSTRY
PARTNER



MATTISON®

CONTRACT BEDS

MATTRESSES | DIVANS | HEADBOARDS | SOFA BEDS

AGUA NOVA - MOSS

T1474



Composition	100% treated Polyester
Width	145cms (57") approx
Usage	Severe Contract Use
Flame Retardant	This fabric conforms to BS 5852 CRIB Ignition Source 5



AGUA NOVA has been designed for use in demanding environments; the Nova collection is a high performance fabric that provides comfort and luxury.

For headboard pricing in AGUA NOVA, please refer to Band C.

COLOUR MATCHING

Every effort is made to ensure the closest possible colour match to our pattern books, but we are unable to guarantee an exact match. If you require to match to fabric, please send us a sample or request a stock cutting of the shade.

The images shown in this document are close representations of fabric colours/weave. We do recommend you request samples to be provided to you prior to ordering. To request samples please contact us via 01473 255 888 or email our sales team on info@mattisoncontractbeds.co.uk



INDUSTRY
PARTNER



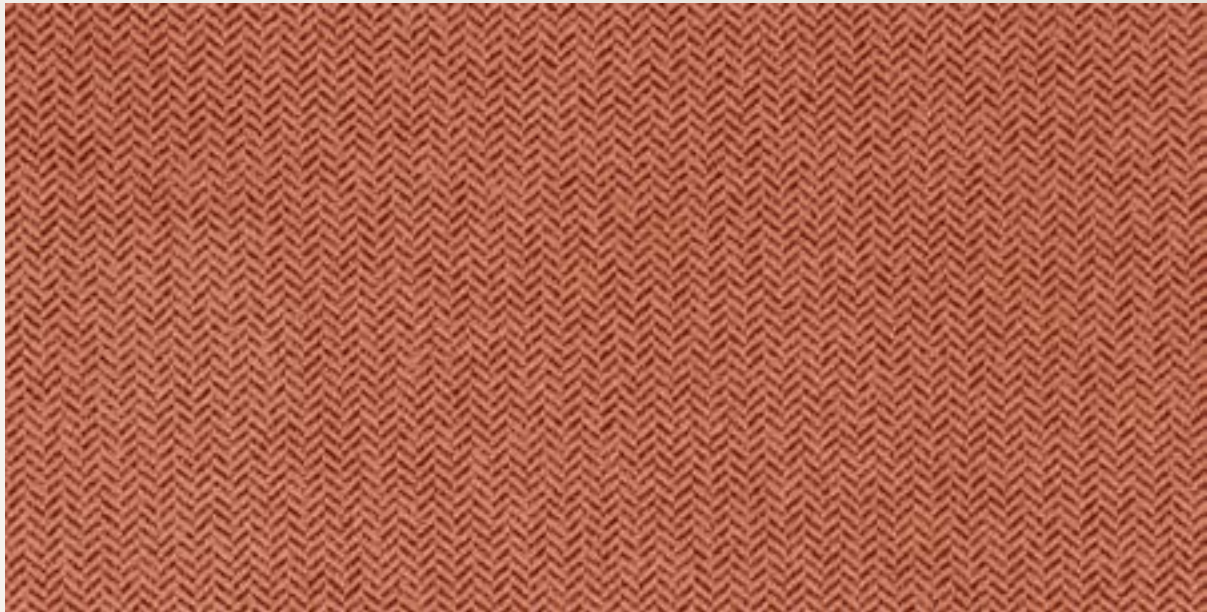
MATTISON®

CONTRACT BEDS

MATTRESSES | DIVANS | HEADBOARDS | SOFA BEDS

AGUA NOVA - CHESTNUT

T1361



Composition	100% treated Polyester
Width	145cms (57") approx
Usage	Severe Contract Use
Flame Retardant	This fabric conforms to BS 5852 CRIB Ignition Source 5



AGUA NOVA has been designed for use in demanding environments; the Nova collection is a high performance fabric that provides comfort and luxury.

For headboard pricing in AGUA NOVA, please refer to Band C.

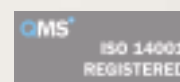
COLOUR MATCHING

Every effort is made to ensure the closest possible colour match to our pattern books, but we are unable to guarantee an exact match. If you require to match to fabric, please send us a sample or request a stock cutting of the shade.

The images shown in this document are close representations of fabric colours/weave. We do recommend you request samples to be provided to you prior to ordering. To request samples please contact us via 01473 255 888 or email our sales team on info@mattisoncontractbeds.co.uk



INDUSTRY
PARTNER



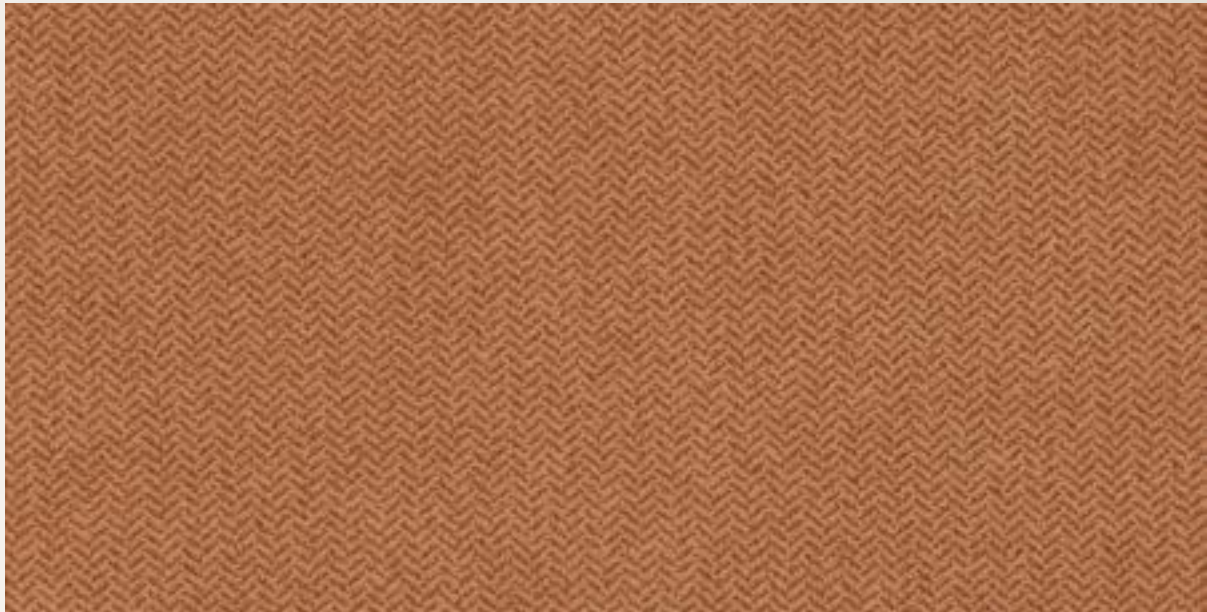
MATTISON®

CONTRACT BEDS

MATTRESSES | DIVANS | HEADBOARDS | SOFA BEDS

AGUA NOVA - MINK

T1372



Composition	100% treated Polyester
Width	145cms (57") approx
Usage	Severe Contract Use
Flame Retardant	This fabric conforms to BS 5852 CRIB Ignition Source 5



AGUA NOVA has been designed for use in demanding environments; the Nova collection is a high performance fabric that provides comfort and luxury.

For headboard pricing in AGUA NOVA, please refer to Band C.

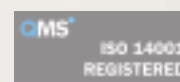
COLOUR MATCHING

Every effort is made to ensure the closest possible colour match to our pattern books, but we are unable to guarantee an exact match. If you require to match to fabric, please send us a sample or request a stock cutting of the shade.

The images shown in this document are close representations of fabric colours/weave. We do recommend you request samples to be provided to you prior to ordering. To request samples please contact us via 01473 255 888 or email our sales team on info@mattisoncontractbeds.co.uk



INDUSTRY
PARTNER



MATTISON®

CONTRACT BEDS

MATTRESSES | DIVANS | HEADBOARDS | SOFA BEDS

AGUA NOVA - WALNUT

T1390



Composition	100% treated Polyester
Width	145cms (57") approx
Usage	Severe Contract Use
Flame Retardant	This fabric conforms to BS 5852 CRIB Ignition Source 5



AGUA NOVA has been designed for use in demanding environments; the Nova collection is a high performance fabric that provides comfort and luxury.

For headboard pricing in AGUA NOVA, please refer to Band C.

COLOUR MATCHING

Every effort is made to ensure the closest possible colour match to our pattern books, but we are unable to guarantee an exact match. If you require to match to fabric, please send us a sample or request a stock cutting of the shade.

The images shown in this document are close representations of fabric colours/weave. We do recommend you request samples to be provided to you prior to ordering. To request samples please contact us via 01473 255 888 or email our sales team on info@mattisoncontractbeds.co.uk



INDUSTRY
PARTNER



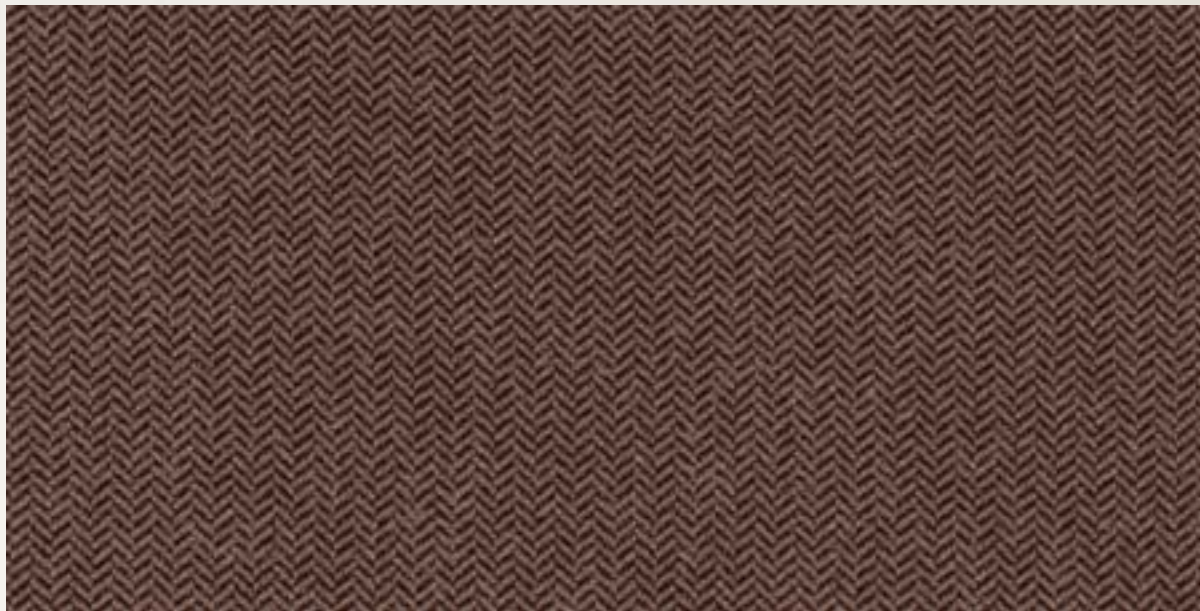
MATTISON®

CONTRACT BEDS

MATTRESSES | DIVANS | HEADBOARDS | SOFA BEDS

AGUA NOVA - NUTMEG

T1352



Composition	100% treated Polyester
Width	145cms (57") approx
Usage	Severe Contract Use
Flame Retardant	This fabric conforms to BS 5852 CRIB Ignition Source 5



AGUA NOVA has been designed for use in demanding environments; the Nova collection is a high performance fabric that provides comfort and luxury.

For headboard pricing in AGUA NOVA, please refer to Band C.

COLOUR MATCHING

Every effort is made to ensure the closest possible colour match to our pattern books, but we are unable to guarantee an exact match. If you require to match to fabric, please send us a sample or request a stock cutting of the shade.

The images shown in this document are close representations of fabric colours/weave. We do recommend you request samples to be provided to you prior to ordering. To request samples please contact us via 01473 255 888 or email our sales team on info@mattisoncontractbeds.co.uk



INDUSTRY
PARTNER



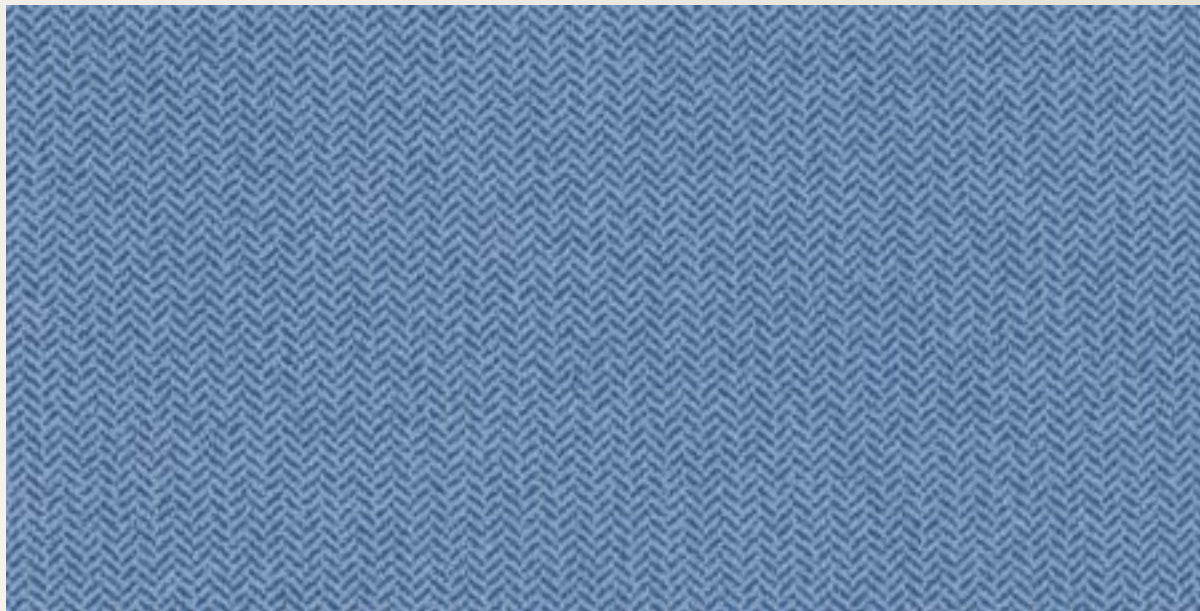
MATTISON®

CONTRACT BEDS

MATTRESSES | DIVANS | HEADBOARDS | SOFA BEDS

AGUA NOVA - WEDGEWOOD

T1505



Composition	100% treated Polyester
Width	145cms (57") approx
Usage	Severe Contract Use
Flame Retardant	This fabric conforms to BS 5852 CRIB Ignition Source 5



AGUA NOVA has been designed for use in demanding environments; the Nova collection is a high performance fabric that provides comfort and luxury.

For headboard pricing in AGUA NOVA, please refer to Band C.

COLOUR MATCHING

Every effort is made to ensure the closest possible colour match to our pattern books, but we are unable to guarantee an exact match. If you require to match to fabric, please send us a sample or request a stock cutting of the shade.

The images shown in this document are close representations of fabric colours/weave. We do recommend you request samples to be provided to you prior to ordering. To request samples please contact us via 01473 255 888 or email our sales team on info@mattisoncontractbeds.co.uk



INDUSTRY
PARTNER



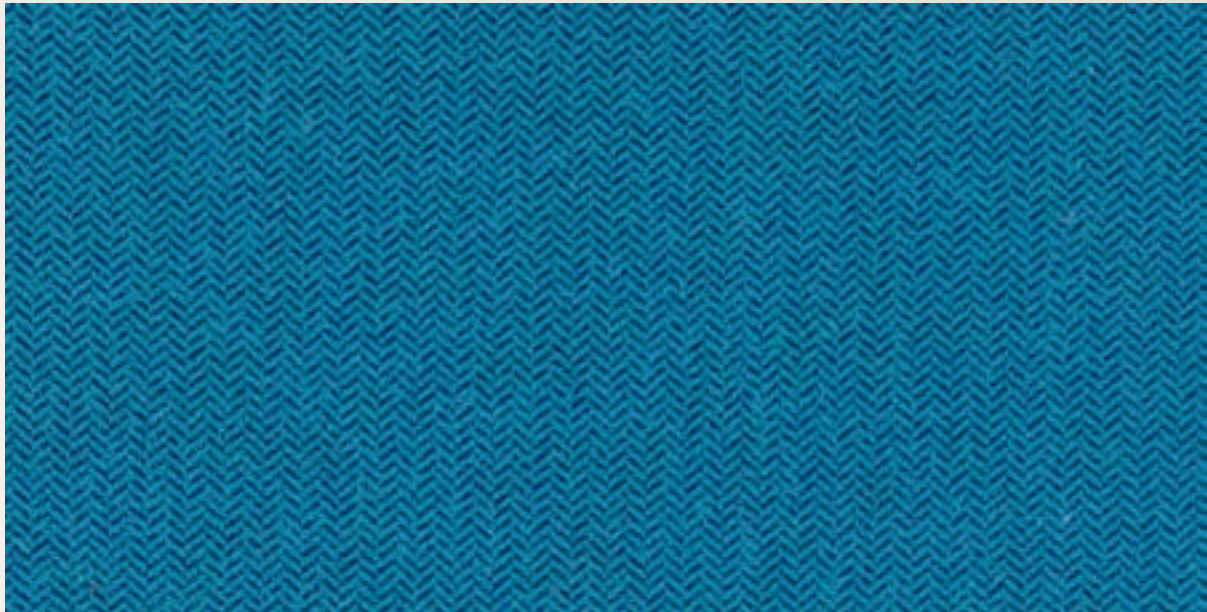
MATTISON®

CONTRACT BEDS

MATTRESSES | DIVANS | HEADBOARDS | SOFA BEDS

AGUA NOVA - ROYAL

T1399



Composition	100% treated Polyester
Width	145cms (57") approx
Usage	Severe Contract Use
Flame Retardant	This fabric conforms to BS 5852 CRIB Ignition Source 5



AGUA NOVA has been designed for use in demanding environments; the Nova collection is a high performance fabric that provides comfort and luxury.

For headboard pricing in AGUA NOVA, please refer to Band C.

COLOUR MATCHING

Every effort is made to ensure the closest possible colour match to our pattern books, but we are unable to guarantee an exact match. If you require to match to fabric, please send us a sample or request a stock cutting of the shade.

The images shown in this document are close representations of fabric colours/weave. We do recommend you request samples to be provided to you prior to ordering. To request samples please contact us via 01473 255 888 or email our sales team on info@mattisoncontractbeds.co.uk



INDUSTRY
PARTNER



MATTISON®

CONTRACT BEDS

MATTRESSES | DIVANS | HEADBOARDS | SOFA BEDS

AGUA NOVA - ORION

T1396



Composition	100% treated Polyester
Width	145cms (57") approx
Usage	Severe Contract Use
Flame Retardant	This fabric conforms to BS 5852 CRIB Ignition Source 5



AGUA NOVA has been designed for use in demanding environments; the Nova collection is a high performance fabric that provides comfort and luxury.

For headboard pricing in AGUA NOVA, please refer to Band C.

COLOUR MATCHING

Every effort is made to ensure the closest possible colour match to our pattern books, but we are unable to guarantee an exact match. If you require to match to fabric, please send us a sample or request a stock cutting of the shade.

The images shown in this document are close representations of fabric colours/weave. We do recommend you request samples to be provided to you prior to ordering. To request samples please contact us via 01473 255 888 or email our sales team on info@mattisoncontractbeds.co.uk



INDUSTRY
PARTNER



MATTISON®

CONTRACT BEDS

MATTRESSES | DIVANS | HEADBOARDS | SOFA BEDS

AGUA NOVA - BLUEBELL

T1378



Composition	100% treated Polyester
Width	145cms (57") approx
Usage	Severe Contract Use
Flame Retardant	This fabric conforms to BS 5852 CRIB Ignition Source 5



AGUA NOVA has been designed for use in demanding environments; the Nova collection is a high performance fabric that provides comfort and luxury.

For headboard pricing in AGUA NOVA, please refer to Band C.

COLOUR MATCHING

Every effort is made to ensure the closest possible colour match to our pattern books, but we are unable to guarantee an exact match. If you require to match to fabric, please send us a sample or request a stock cutting of the shade.

The images shown in this document are close representations of fabric colours/weave. We do recommend you request samples to be provided to you prior to ordering. To request samples please contact us via 01473 255 888 or email our sales team on info@mattisoncontractbeds.co.uk



INDUSTRY
PARTNER



MATTISON®

CONTRACT BEDS

MATTRESSES | DIVANS | HEADBOARDS | SOFA BEDS

AGUA NOVA - VANILLA

T1351



Composition	100% treated Polyester
Width	145cms (57") approx
Usage	Severe Contract Use
Flame Retardant	This fabric conforms to BS 5852 CRIB Ignition Source 5



AGUA NOVA has been designed for use in demanding environments; the Nova collection is a high performance fabric that provides comfort and luxury.

For headboard pricing in AGUA NOVA, please refer to Band C.

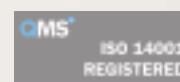
COLOUR MATCHING

Every effort is made to ensure the closest possible colour match to our pattern books, but we are unable to guarantee an exact match. If you require to match to fabric, please send us a sample or request a stock cutting of the shade.

The images shown in this document are close representations of fabric colours/weave. We do recommend you request samples to be provided to you prior to ordering. To request samples please contact us via 01473 255 888 or email our sales team on info@mattisoncontractbeds.co.uk



INDUSTRY
PARTNER



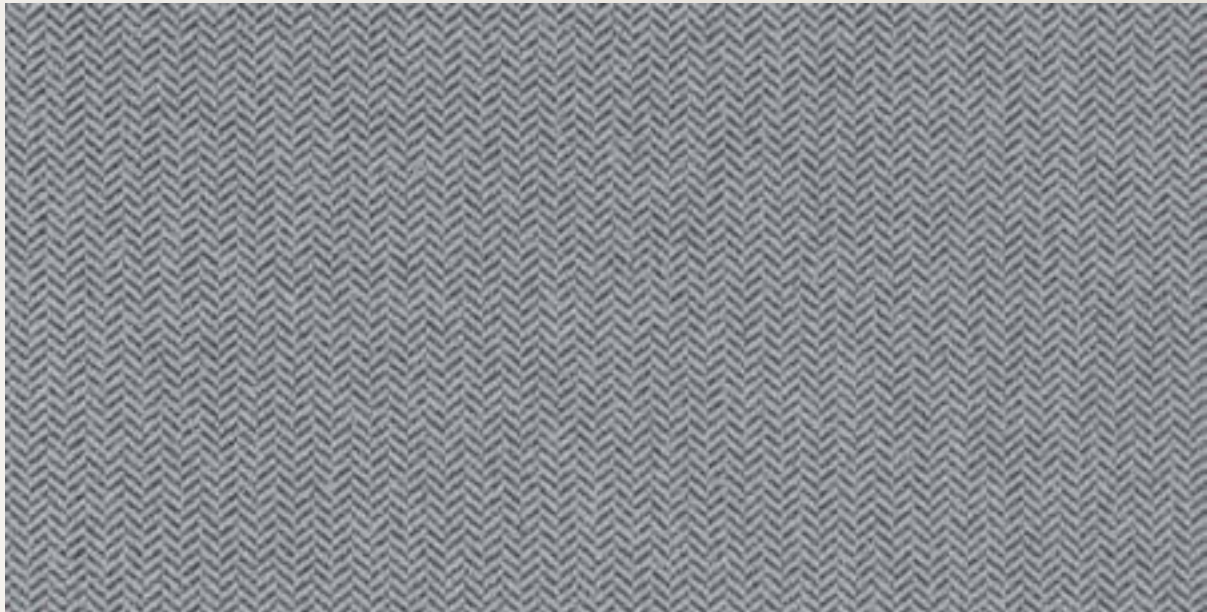
MATTISON®

CONTRACT BEDS

MATTRESSES | DIVANS | HEADBOARDS | SOFA BEDS

AGUA NOVA - DOVE

T1356



Composition	100% treated Polyester
Width	145cms (57") approx
Usage	Severe Contract Use
Flame Retardant	This fabric conforms to BS 5852 CRIB Ignition Source 5



AGUA NOVA has been designed for use in demanding environments; the Nova collection is a high performance fabric that provides comfort and luxury.

For headboard pricing in AGUA NOVA, please refer to Band C.

COLOUR MATCHING

Every effort is made to ensure the closest possible colour match to our pattern books, but we are unable to guarantee an exact match. If you require to match to fabric, please send us a sample or request a stock cutting of the shade.

The images shown in this document are close representations of fabric colours/weave. We do recommend you request samples to be provided to you prior to ordering. To request samples please contact us via 01473 255 888 or email our sales team on info@mattisoncontractbeds.co.uk



INDUSTRY
PARTNER



MATTISON®

CONTRACT BEDS

MATTRESSES | DIVANS | HEADBOARDS | SOFA BEDS

AGUA NOVA - RAVEN

T1364



Composition	100% treated Polyester
Width	145cms (57") approx
Usage	Severe Contract Use
Flame Retardant	This fabric conforms to BS 5852 CRIB Ignition Source 5



AGUA NOVA has been designed for use in demanding environments; the Nova collection is a high performance fabric that provides comfort and luxury.

For headboard pricing in AGUA NOVA, please refer to Band C.

COLOUR MATCHING

Every effort is made to ensure the closest possible colour match to our pattern books, but we are unable to guarantee an exact match. If you require to match to fabric, please send us a sample or request a stock cutting of the shade.

The images shown in this document are close representations of fabric colours/weave. We do recommend you request samples to be provided to you prior to ordering. To request samples please contact us via 01473 255 888 or email our sales team on info@mattisoncontractbeds.co.uk



INDUSTRY
PARTNER



MATTISON®

CONTRACT BEDS

MATTRESSES | DIVANS | HEADBOARDS | SOFA BEDS

AGUA NOVA - EBONY

T1391



Composition	100% treated Polyester
Width	145cms (57") approx
Usage	Severe Contract Use
Flame Retardant	This fabric conforms to BS 5852 CRIB Ignition Source 5



AGUA NOVA has been designed for use in demanding environments; the Nova collection is a high performance fabric that provides comfort and luxury.

For headboard pricing in AGUA NOVA, please refer to Band C.

COLOUR MATCHING

Every effort is made to ensure the closest possible colour match to our pattern books, but we are unable to guarantee an exact match. If you require to match to fabric, please send us a sample or request a stock cutting of the shade.

The images shown in this document are close representations of fabric colours/weave. We do recommend you request samples to be provided to you prior to ordering. To request samples please contact us via 01473 255 888 or email our sales team on info@mattisoncontractbeds.co.uk



INDUSTRY
PARTNER



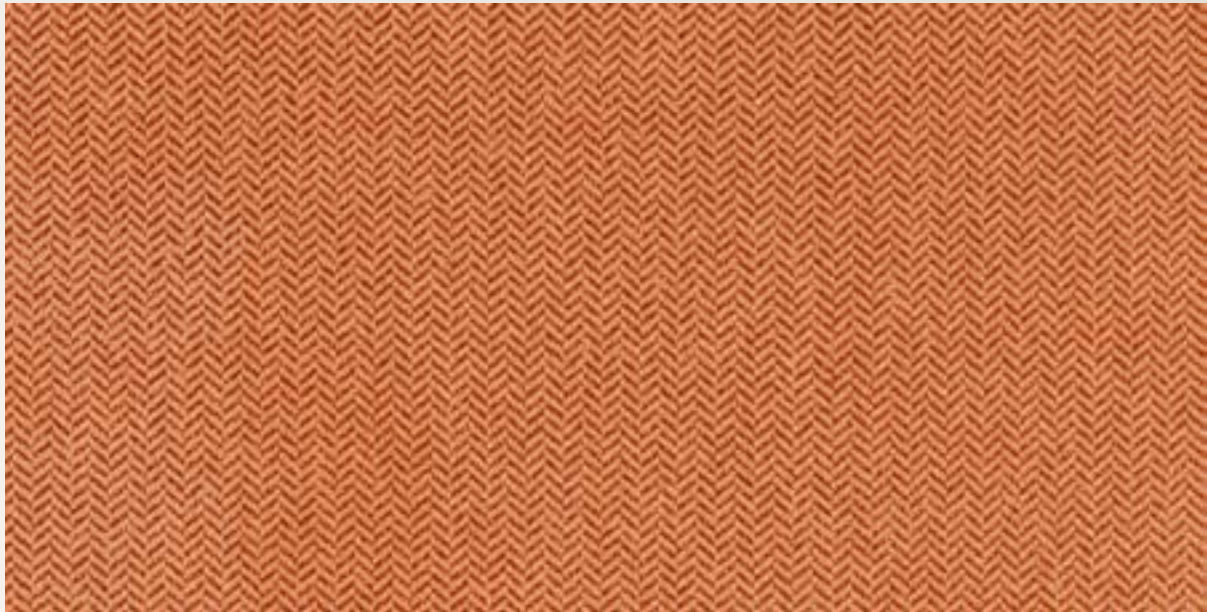
MATTISON®

CONTRACT BEDS

MATTRESSES | DIVANS | HEADBOARDS | SOFA BEDS

AGUA NOVA - BURNT ORANGE

T1452



Composition	100% treated Polyester
Width	145cms (57") approx
Usage	Severe Contract Use
Flame Retardant	This fabric conforms to BS 5852 CRIB Ignition Source 5



AGUA NOVA has been designed for use in demanding environments; the Nova collection is a high performance fabric that provides comfort and luxury.

For headboard pricing in AGUA NOVA, please refer to Band C.

COLOUR MATCHING

Every effort is made to ensure the closest possible colour match to our pattern books, but we are unable to guarantee an exact match. If you require to match to fabric, please send us a sample or request a stock cutting of the shade.

The images shown in this document are close representations of fabric colours/weave. We do recommend you request samples to be provided to you prior to ordering. To request samples please contact us via 01473 255 888 or email our sales team on info@mattisoncontractbeds.co.uk



INDUSTRY
PARTNER



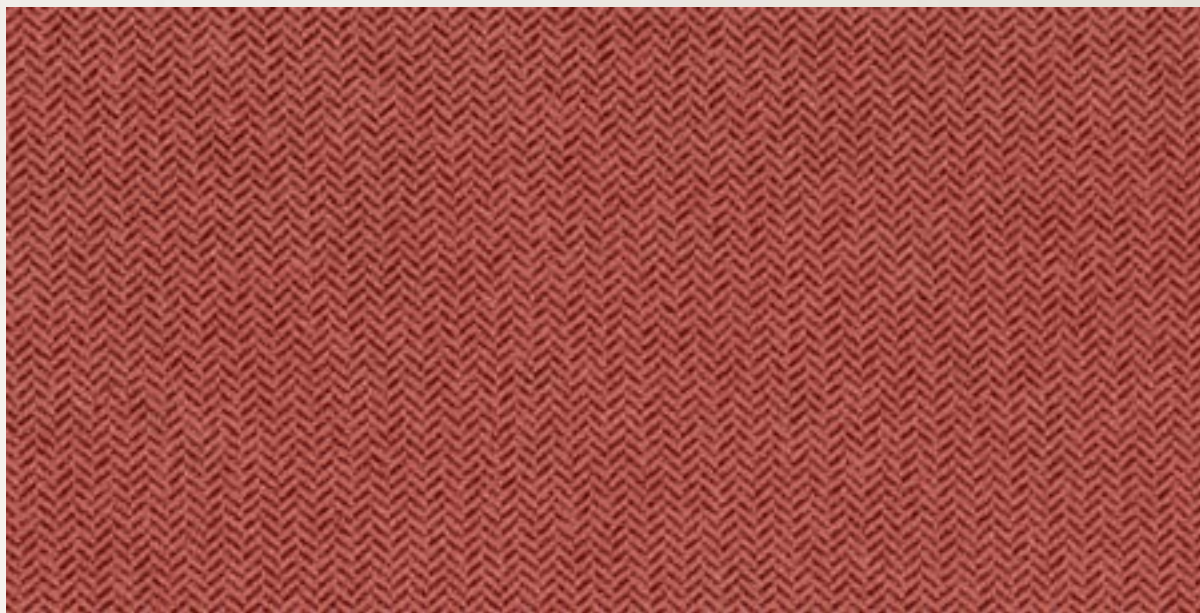
MATTISON®

CONTRACT BEDS

MATTRESSES | DIVANS | HEADBOARDS | SOFA BEDS

AGUA NOVA - RUSSET

T1370



Composition	100% treated Polyester
Width	145cms (57") approx
Usage	Severe Contract Use
Flame Retardant	This fabric conforms to BS 5852 CRIB Ignition Source 5



AGUA NOVA has been designed for use in demanding environments; the Nova collection is a high performance fabric that provides comfort and luxury.

For headboard pricing in AGUA NOVA, please refer to Band C.

COLOUR MATCHING

Every effort is made to ensure the closest possible colour match to our pattern books, but we are unable to guarantee an exact match. If you require to match to fabric, please send us a sample or request a stock cutting of the shade.

The images shown in this document are close representations of fabric colours/weave. We do recommend you request samples to be provided to you prior to ordering. To request samples please contact us via 01473 255 888 or email our sales team on info@mattisoncontractbeds.co.uk



INDUSTRY
PARTNER



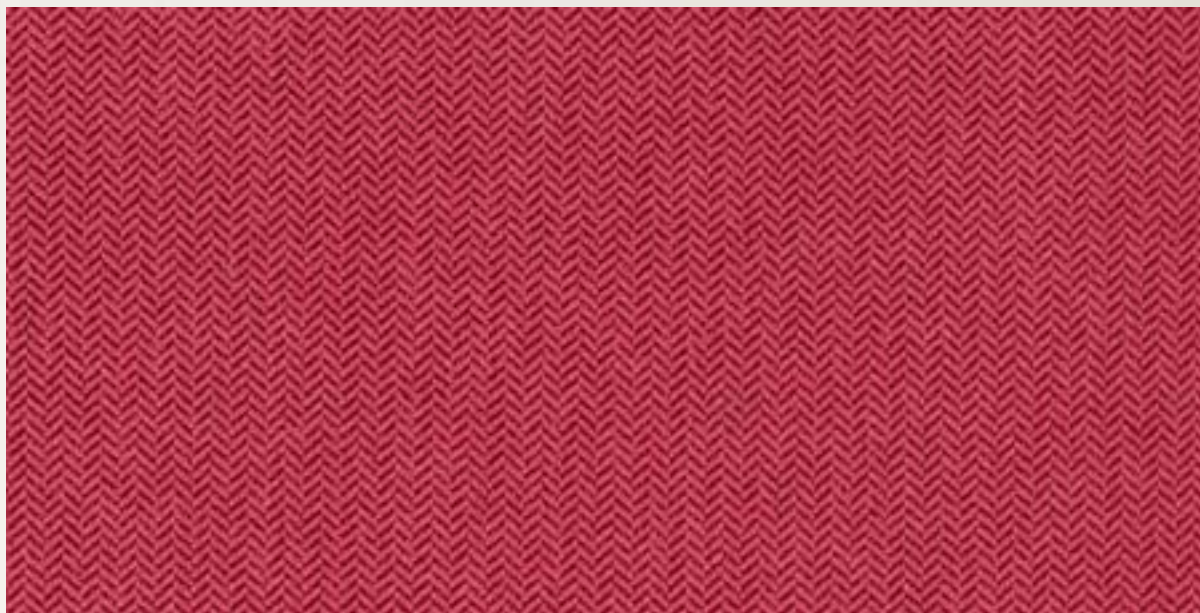
MATTISON®

CONTRACT BEDS

MATTRESSES | DIVANS | HEADBOARDS | SOFA BEDS

AGUA NOVA - RASPBERRY

T1395



Composition	100% treated Polyester
Width	145cms (57") approx
Usage	Severe Contract Use
Flame Retardant	This fabric conforms to BS 5852 CRIB Ignition Source 5



AGUA NOVA has been designed for use in demanding environments; the Nova collection is a high performance fabric that provides comfort and luxury.

For headboard pricing in AGUA NOVA, please refer to Band C.

COLOUR MATCHING

Every effort is made to ensure the closest possible colour match to our pattern books, but we are unable to guarantee an exact match. If you require to match to fabric, please send us a sample or request a stock cutting of the shade.

The images shown in this document are close representations of fabric colours/weave. We do recommend you request samples to be provided to you prior to ordering. To request samples please contact us via 01473 255 888 or email our sales team on info@mattisoncontractbeds.co.uk



INDUSTRY
PARTNER



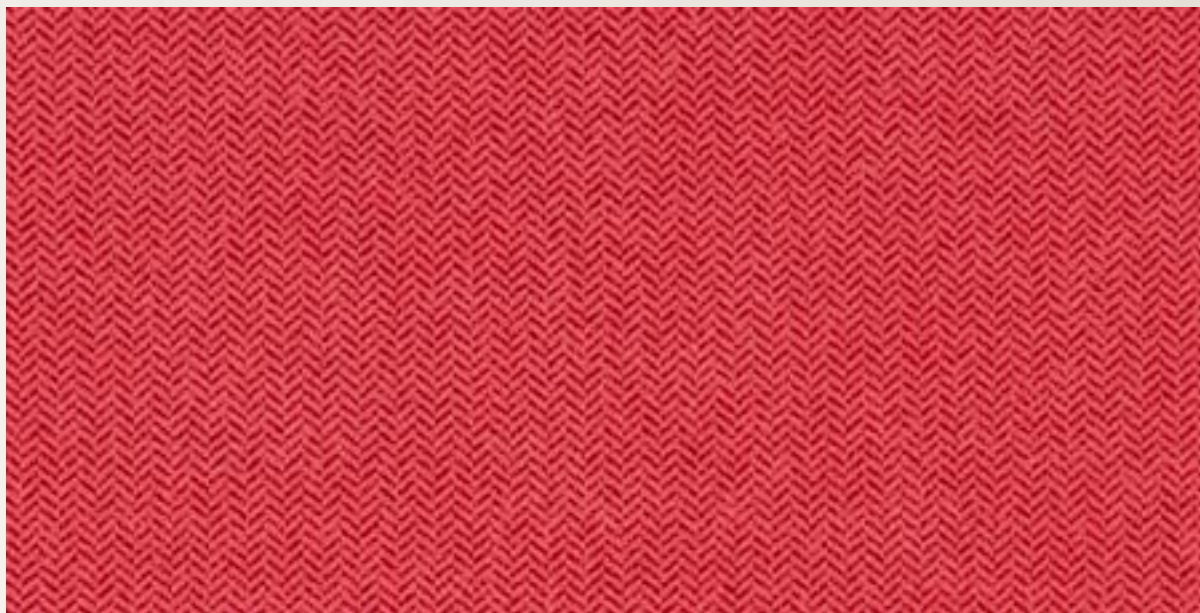
MATTISON®

CONTRACT BEDS

MATTRESSES | DIVANS | HEADBOARDS | SOFA BEDS

AGUA NOVA - POPPY

T1357



Composition	100% treated Polyester
Width	145cms (57") approx
Usage	Severe Contract Use
Flame Retardant	This fabric conforms to BS 5852 CRIB Ignition Source 5



AGUA NOVA has been designed for use in demanding environments; the Nova collection is a high performance fabric that provides comfort and luxury.

For headboard pricing in AGUA NOVA, please refer to Band C.

COLOUR MATCHING

Every effort is made to ensure the closest possible colour match to our pattern books, but we are unable to guarantee an exact match. If you require to match to fabric, please send us a sample or request a stock cutting of the shade.

The images shown in this document are close representations of fabric colours/weave. We do recommend you request samples to be provided to you prior to ordering. To request samples please contact us via 01473 255 888 or email our sales team on info@mattisoncontractbeds.co.uk



INDUSTRY
PARTNER



MATTISON®

CONTRACT BEDS

M A T T R E S S E S | D I V A N S | H E A D B O A R D S | S O F A B E D S

AGUA NOVA

Composition	100% treated Polyester
Width	145cms (57") approx
Usage	Severe Contract Use
Flame Retardant	This fabric conforms to BS 5852 CRIB Ignition Source 5



	Fabric Specifications
Flame retardant	Upholstery: BS7176 Crib 5, IMO Resolution A652 (16), Cal 117, M2
Anti-bacterial/Anti-fungal	Will not support microbial or fungal growth including Salmonella, E Coli and MRSA
Waterproof	Water or oil based solutions will not penetrate or absorb through the fabric; Hydrostatic Head BS3424 > 1 metre
Breathable	Moisture vapour permeable
Martindale abrasion	Severe contract grade > 100,000
Tear strength	BS4303 Severe Contract Grade
Breaking strength	BS2576 Severe Contract Grade
Urea resistance	BS4324 part 19. No deterioration after 24 hours, 5.5ph, 8.8ph Urea soak
Stain resistant	Excellent stain removal has been observed for grease, ink, blood, urine, coffee, iodine, betadine, ketchup, chewing gum, chocolate, grape juice
Composition	100% Polyester

Fabric Care

Use a vacuum cleaner or soft brush to remove dust and solid particles.

Always try cleaning products on a hidden piece of fabric to test suitability.

Wipe frequently with a damp cloth to maintain the appearance of the fabric.

All spillages should be removed immediately with a clean absorbent cloth.

Most stains can be removed using cold/warm water and a clean microfibre cloth, however poorly fixed clothing dyes may cause permanent staining.

Stains from products containing oil and grease should be treated with a spirit based solution.

If soap based cleaners are used, all soap residues must be rinsed from the fabric.

Can be cleaned with mild Hypochlorite solutions (10,000 ppm of available chlorine) or Mineral Spirit.

Can be steam cleaned in situ.

Remove all stains immediately before they set.

Please refer to the Care Sheet on the Agua website for further details www.aguafabrics.com

COLOUR MATCHING

Every effort is made to ensure the closest possible colour match to our pattern books, but we are unable to guarantee an exact match. If you require to match to fabric, please send us a sample or request a stock cutting of the shade.

The images shown in this document are close representations of fabric colours/weave. We do recommend you request samples to be provided to you prior to ordering. To request samples please contact us via 01473 255 888 or email our sales team on info@mattisoncontractbeds.co.uk



INDUSTRY
PARTNER

