

Sofa beds for business · Designed for demand

# NEW

Contemporary sofa beds



**MATTISON**<sup>®</sup>  
CONTRACT BEDS

# The Cedar

**Designed exclusively for the hotel and contract market, we're proud to offer our contemporary sofa bed range.** We pride ourselves on producing British made beds and sofa beds. With three models - the Willow, Rowan and Cedar - available in two sizes, you're sure to find something to complement your guest bedrooms. Add to that the choice of 16 Proposta fabrics and you'll find you've a wide range of choice, safe in the knowledge that they meet with UK fire regulations.

All sofa beds come with a 12cm multi-layered, tufted, no turn pocket sprung mattress and 2 matching scatter cushions.

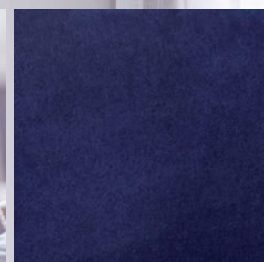


**Cedar in Aubergine Proposta fabric**

All sofa beds conform to BS 7176:2007 (Medium Hazard) and have been subjected to Ignition Source 5 (Crib 5) testing and a cigarette and match test.

The Cedar is our flagship sofa bed model featuring traditional scroll-shaped arms. This model will add style to any room - and can transform with ease into an accommodating pocket-sprung bed.





Rowan in Ocean Proposta fabric

# The Rowan



All sofa beds come with a 12cm multi-layered, tufted, no turn pocket sprung mattress and 2 matching scatter cushions.

Shown here in striking Ocean Proposta fabric, this model features bullet shaped arms and captures the attention in any room.

All sofa beds conform to BS 7176:2007 (Medium Hazard) and have been subjected to Ignition Source 5 (Crib 5) testing and a cigarette and match test.



With an industry-leading SEDAC mechanism, the Rowan is easily transformed from sofa to bed. With a pocket-sprung mattress tucked away inside, it's sure to offer a comfortable sleep.

# The Willow

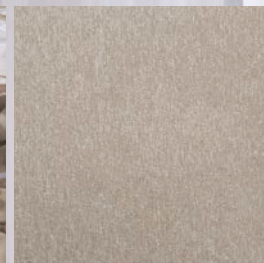
All sofa beds come with a 12cm multi-layered, tufted, no turn pocket sprung mattress and 2 matching scatter cushions.

This modern sofa bed offers a practical solution to flexible sleeping space. The clean lines and beautiful upholstery add a touch of style to any room.

All sofa beds conform to BS 7176:2007 (Medium Hazard) and have been subjected to Ignition Source 5 (Crib 5) testing and a cigarette and match test.



The Willow, and all other models, have been designed to ensure that installation is hassle-free; the arms and mechanism can all be removed to ensure easy room access.







# Excellent Design

Designed exclusively for the hotel and contract market, we're very proud to announce the launch of our contemporary sofa bed range.

Mattison Contract Beds is one of the industry's leading manufacturers of contract beds, headboard and sofa beds with over 150 years of experience. All our products are manufactured on site at our purpose-built factory in the heart of Ipswich, Suffolk, by our highly skilled work force, and delivered nationwide via our own transport fleet. We also export to various countries worldwide.

Each model in our sofa bed range comes complete with an industry-leading SEDAC 2-fold mechanism offering the comfort of a bed in a sofa, thanks to the

12cm thick, no turn mattress while keeping a modest seat height. The 12cm mattress is the shallowest pocket-sprung mattress manufactured by Mattison Contract Beds offering quality comfort in a compact design.

In addition, the mechanism has an integrated headrest, which is automatically closed upon folding the action, preventing the headrest from getting damaged.

Excellent design, beautifully crafted.



**BCFA**

**MADE IN  
BRITAIN**

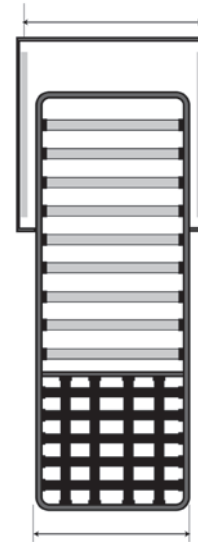
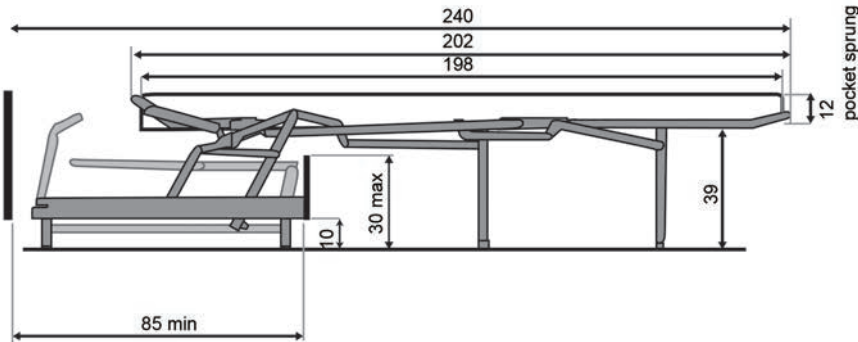
*150 years*  
of British Manufacturing

# The Specifications

Please note that all measurements given below are stated in centimeters.

Sofa Size	Model	Width	Height	Depth
2.5 seater	Cedar	185	71	93
2.5 seater	Rowan	170	71	91
2.5 seater	Willow	170	71	91
3 seater	Cedar	205	71	93
3 seater	Rowan	190	71	91
3 seater	Willow	190	71	91

Mattress Size	Width	Length	Depth
2.5 seater	113	195	12
3 seater	133	195	12



# The Materials

All sofa beds conform to BS 7176:2007 (Medium Hazard) and have been subjected to Ignition Source 5 (Crib 5) testing and a cigarette and match test.

Item	Materials used during manufacturing
Seat cushions	Loose - foam with a fibre wrap.
Back cushions	Loose - fibre plus two scatter cushions.
Interliner	Upholstered with a 100% cotton Schedule 3 interliner.
Fabric	Proposta fabric - a new generation of machine washable textured plains with a wonderful soft handle which conforms to Oeko-tex Standard 100 for environmentally friendly and human health safety. Own fabric can be used provided that it meets with fire safety regulations - please call use for more information.
Frame / Arms	Hardwood and Oriented Strand Board.
Back suspension	Webbing.
Bed action	SEDAC two-fold action with slats and webbed suspension - intgrated headrest with lockable position.
Mattress	12cm multi-layered, tufted, no turn, pocket sprung (CRIB 5).
Mattress ticking	100% cotton (CRIB 5).
Feet	Solid beech feet as standard, alternative colour options available upon request.
Guarantee	Bed action is guaranteed for two years.



**MATTISON**<sup>®</sup>  
CONTRACT BEDS

[www.mattisoncontractbeds.co.uk](http://www.mattisoncontractbeds.co.uk)  
[info@mattisoncontractbeds.co.uk](mailto:info@mattisoncontractbeds.co.uk)

Tel: 01473 255 888  
Fax: 01473 255 889